

±0.86 CP ZONED ACRES

LAKESHORE DRIVE, LAKE ELSINORE, CALIFORNIA

**FOR SALE
VACANT LAND**



FOR MORE INFORMATION, PLEASE CONTACT:

CAREY PASTOR | Senior Vice President

(951) 297-7434 | cpastor@cbcsocalgroup.com

CalDRE License # 01403298



**COLDWELL
BANKER
COMMERCIAL**

SC

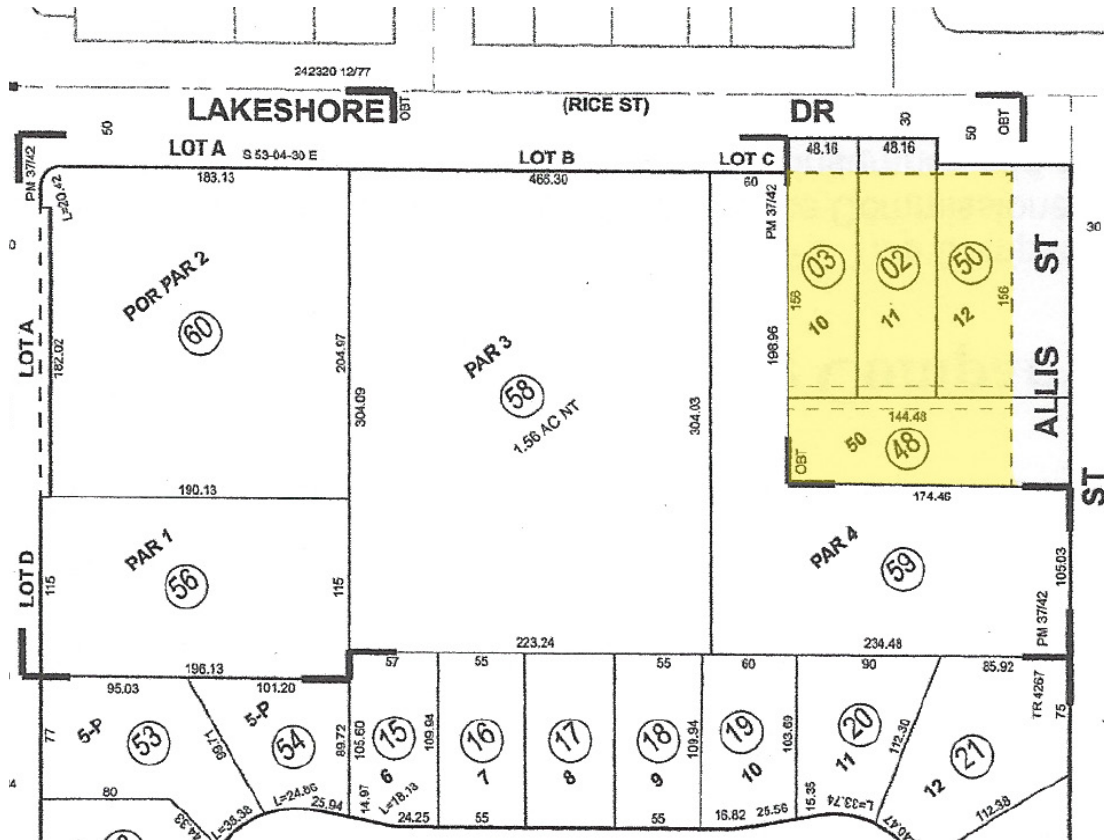
CalDRE License # 02089395

±0.86 CP ZONED ACRES

LAKE SHORE DRIVE, LAKE ELSINORE, CALIFORNIA

FOR SALE
VACANT LAND

PARCEL MAP



PROPERTY HIGHLIGHTS

- 4 parcels totaling 0.86 Acres
- APN 379-241-002 / 0.18 AC (7,841 SF) Vacant parcel
- APN 379-241-003 / 0.17 AC (7,405 SF) Vacant parcel
- APN 379-241-048 / 0.23 AC (10,019 SF) Vacant parcel
- APN 379-241-050 / 0.28 AC (12,197 SF) Vacant parcel
- Commercial Park (CP) Zoning City of Lake Elsinore
- Frontage on Lake Shore Drive which has a traffic count of 19,100 CPD
- Offered For Sale at \$475,000



0.86 AC ON LAKESHORE DRIVE

FOR MORE INFORMATION, PLEASE CONTACT:

CAREY PASTOR
 Senior Vice President
 951.297.7434
 cpastor@cbcsocalgroup.com
 CalDRE # 01403298

27368 Via Industria | Suite 102
 Temecula | California | 92590
 t 951.200.7683 | f 951.239.3147
 cbcsocalgroup.com
 CalDRE # 02089395

