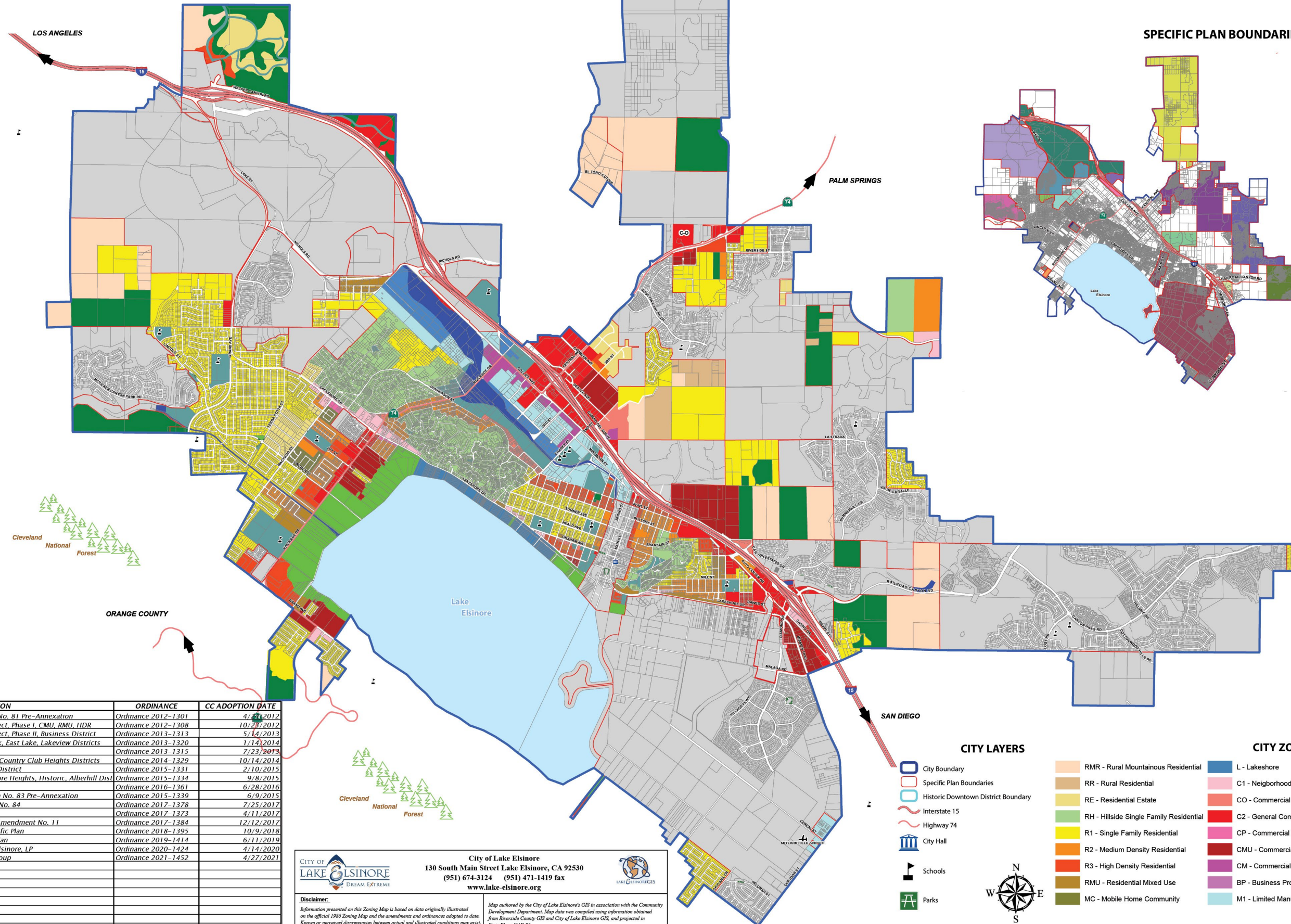
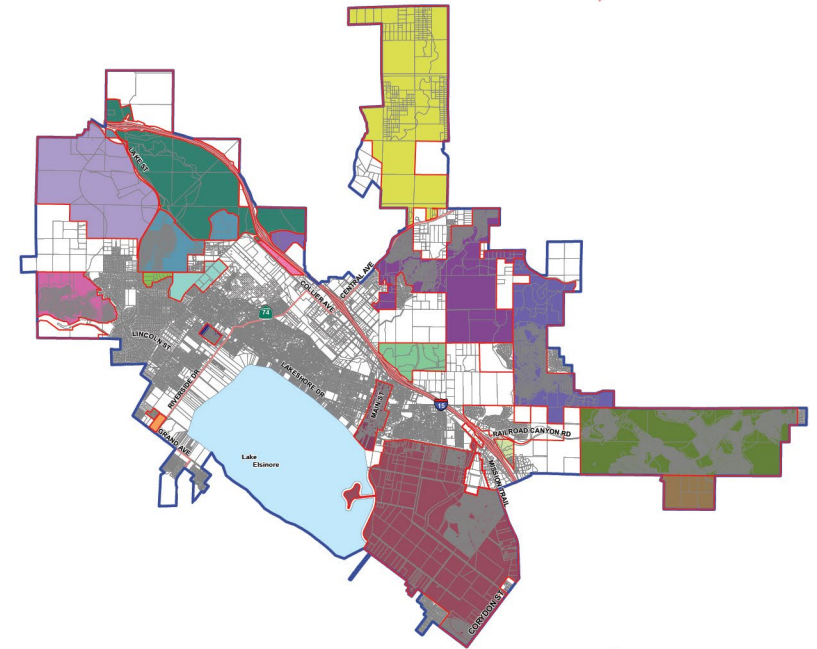


CITY OF LAKE ELSINORE ZONING MAP



SPECIFIC PLAN BOUNDARIES



SPECIFIC PLANS

- Alberhill Ranch
- Alberhill Villages
- Canyon Creek
- Canyon Estates
- Canyon Hills
- Cape of Good Hope
- Cottage Lane
- Diamond
- Downtown Elsinore
- East Lake
- Elsinore City Center
- La Laguna Estates
- Lakeshore Village
- Murdock Alberhill Ranch
- Nichols Ranch
- North Peak
- Outlet Center
- Ramsgate
- Spyglass Ranch
- Terracina
- The Village at Lakeshore
- Tuscany Hills

Note: Please refer to adopted Specific Plan to obtain accurate Zoning and Land Use Designations.

REVISION	ORDINANCE	CC ADOPTION DATE
ZC 2012-01 Third Street Annexation No. 81 Pre-Annexation	Ordinance 2012-1301	4/27/2012
ZC 2012-03 Consistency Zoning Project, Phase I, CMU, RMU, HDR	Ordinance 2012-1308	10/23/2012
ZC 2013-01 Consistency Zoning Project, Phase II, Business District	Ordinance 2013-1313	5/14/2013
ZC 2013-04 CZP, Phase III, North Peak, East Lake, Lakeview Districts	Ordinance 2013-1320	1/14/2014
ZC 2013-03 7-Eleven	Ordinance 2013-1315	7/23/2013
ZC 2014-04 CZP Phase IV Riverview, Country Club Heights Districts	Ordinance 2014-1329	10/14/2014
ZC 2014-06 CZP Phase V Lake Edge District	Ordinance 2015-1331	2/10/2015
ZC 2015-01 CZP Phase VI Lake Elsinore Heights, Historic, Alberhill Dist	Ordinance 2015-1334	9/8/2015
ZC 2016-02 Alberhill Villages	Ordinance 2016-1361	6/28/2016
ZC 2014-02 Nichols Road Annexation No. 83 Pre-Annexation	Ordinance 2015-1339	6/9/2015
ZC 2014-05 The Summit Annexation No. 84	Ordinance 2017-1378	7/25/2017
ZC 2017-01 McKenna Court	Ordinance 2017-1373	4/11/2017
ZC 2017-03 East Lake Specific Plan, Amendment No. 11	Ordinance 2017-1384	12/12/2017
ZC 2018-02 Downtown Elsinore Specific Plan	Ordinance 2018-1395	10/9/2018
ZC 2018-01 Nichols Ranch Specific Plan	Ordinance 2019-1414	6/11/2019
ZC 2019-06 Debra Wong, RKW MLW Elsinore, LP	Ordinance 2020-1424	4/14/2020
ZC 2020-01 Ilan Golcheh, Golcheh Group	Ordinance 2021-1452	4/27/2021

CITY OF LAKE ELSINORE
 130 South Main Street Lake Elsinore, CA 92530
 (951) 674-3124 (951) 471-1419 fax
 www.lake-elsinore.org

City of Lake Elsinore
 Information presented on this Zoning Map is based on data originally illustrated on the official 1985 Zoning Map and the amendments and ordinances adopted to date. Known or perceived discrepancies between actual and illustrated conditions may exist. No claim is made as to the accuracy or completeness of the data contained herein.

Map authored by the City of Lake Elsinore's GIS in association with the Community Development Department. Map data was compiled using information obtained from Riverside County GIS and City of Lake Elsinore GIS, and projected in State Plane NAD 83.

- ### CITY LAYERS
- City Boundary
 - Specific Plan Boundaries
 - Historic Downtown District Boundary
 - Interstate 15
 - Highway 74
 - City Hall
 - Schools
 - Parks
- ### CITY ZONING
- RMR - Rural Mountainous Residential
 - RR - Rural Residential
 - RE - Residential Estate
 - RH - Hillside Single Family Residential
 - R1 - Single Family Residential
 - R2 - Medium Density Residential
 - R3 - High Density Residential
 - RMU - Residential Mixed Use
 - MC - Mobile Home Community
 - L - Lakeshore
 - C1 - Neighborhood Commercial
 - CO - Commercial Office
 - C2 - General Commercial
 - CP - Commercial Park
 - CMU - Commercial Mixed Use
 - CM - Commercial Manufacturing
 - BP - Business Professional
 - M1 - Limited Manufacturing
 - M2 - General Manufacturing
 - M3 - Mineral Resources/Related Manufacturing
 - PI - Public/Institutional
 - OS - Open Space
 - R - Recreation
 - OS - Open Space (Floodway)
 - SP - Specific Plan
 - SPA - Specific Plan Area

